



**DIGITAL INK
PRINTING
EQUIPMENT &
INSTRUMENTS
TRADING CO. LLC**

**Eco Solvent Printer
Solvent Printer
No Cut Printer
UV DTF Printer
UV Hybrid Printer
Dye Sublimation Printer
UV Flatbed & Roll to Roll Printer**

**CNC Router
Laser Engraver**

☎ +971522266185 | +97338106842

✉ sanjaydj@icloud.com

**Dubai
Rasis Business Centre, Al Barsha First Dubai**

**Bahrain
Bldg # 490D, Flat #11 Road # 1609, Muharraq Kingdom of Bahrain**

ECO SOL. PRINTER

WITCOLOR
Digital

ULTRA i3200 1702S/1704S



Technical Specification 1702S/1704S 1.6 METER ECO SOLVENT PRINTER	
Printer Model:	Epson i3200 1702S/1704S
Print Head Quality :	Epson i3200 E1 Head
Printing Width :	1.62
Printing Mode :	2 Head – 3 Pass 64 M ² /H, 4 Pass 48 M ² /H, 6 Pass 32 M ² /H 3 Head – 3 Pass 96 M ² /H, 4 Pass 74 M ² /H, 6 Pass 48 M ² /H 4 Head – 3 Pass 120 M ² /H, 4 Pass 96 M ² /H, 6 Pass 56 M ² /H
Ink Type :	Eco Solvent Ink
Media Processing :	Roll To Roll +Auto Feeding +auto Take Up
Media Heating :	Pre & Post Media Heating
Image Format :	Tiff ,Jpg,Eps ,Pdf
Rip Software :	United Fancy /Maintop
Interface:	RJ45
Operating Sysytem :	Windows 7 /Windows 10
Power Supply:	AC220v 50 Hz
Power :	4200w
Temperature :	20 – 30 °C
Humidity ;	60 -70 %
Packing Size:	2.7 X 1.00 X 1.00 M
Gw /nw :	530kg/430 Kg

ECO SOLVENT PRINTER

3.2



F3202/3/4

I3200-E1



Mode	F-X3202-I3200-A1 F-X3202-I3200-E1	F-X3203/4-I3200-A1 F-X3203/4-I3200-E1	F-X3204-I3200-A1 F-X3204-I3200-E1
Printhead and Quantity	I3200-A1/I3200-E1 2pcs	I3200-A1/I3200-E1 3pcs	I3200-A1/I3200-E1 4pcs
Printing Speed/Mode	4PASS:42m ² /h 6PASS:30m ² /h	4PASS:65m ² /h 6PASS:40m ² /h	4PASS:80m ² /h 6PASS:60m ² /h

PRODUCT FEATURES

- Optional 2/3/4 pcs I3200-E1/I3200-A1 printheads;
- Double power automatic material take up and feeding system, materials feeding and take up more accurate and stable;
- Standard front, middle and back platform heater;
- Wide width ,high-speed printing, no wrinkle and deviation.



SPECIFICATIONS

Print Width	3.2M	RIP Software	Maintop / Photoprint (Optional)
Heating System	Standard with front infrared dryer	Media Type	All kinds of indoor and outdoor advertising materials and decoration materials
Temperature/Humidity	Temperature: 20-30C , Humidity: 45-65%	Dimensions(mm)	L4550*W910*H1550mm
Power	2pcs	Machine Power : 2350W External drying 48 00W	Packing Dimensions(mm)
	3pcs	Machine Power: 2350W Preposition: 4800W +2400W	Net Weight(KG)
	4pcs	Machine Power : 2350W Preposition :4800W+4800W	Gross Weight(KG)
			L4860*W725*H845mm L4590*W1015*H1500mm
			540KG
			760KG

High Resolution Printer

ECO SOL. PRINTER

FY-1600/1800 series

L2670mm×W760mm×H1330mm

L2700mm×W760mm×H1600mm

L3100mm×W760mm×H1600mm



1.6M /1.9mm print width

Keep improving,high resolution,ease of use

Specifications

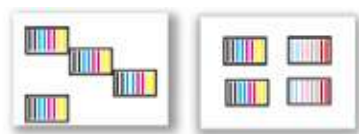
Model		FY-1600ES	FY-1600MS	FY-1804		
Printhead		EPSON I3200			EPSON I3200	
Number of Printhead		2pcs	4pcs	4pcs (CMYK)	4pcs (C,M,Y,K,Lc,Lm,Lk,R)	
Print width		1600mm				
Print Speed *	4PASS	40m ² /h	78m ² /h	80m ² /h	40m ² /h	
	6PASS	30m ² /h	52m ² /h	60m ² /h	30m ² /h	

1. The speed data are taken from the printer at high speed,a difference of 10% may occur when running with different computers.
2. Product specifications are subject to change without notice in advance.Color and shape in picture are for reference,computer and monitor not included.All rights reserved!

Features

- New generation of Crash-Sensor System can effectively protect print head from physical during the printing.
- Silent dual rail structure,featuring speed and silence,more stable during the operation process of carriage moving to provide higher printing accuracy.
- The large-capacity continuous ink supply system is adopted to ensure the long-term operation with convenience to observe ink level.
- Dual-power feeding system, and damping feeding system to ensure accurate taking-up and printing steps.
- Automatic liftable capping station for better and more stable cleaning.
- Each pinch roller set has three rollers, with smaller gaps in between than the ones with 2 roller, which is mostly used on other brands of printers. Media moves more steady and accurately.

FY-1804



Variable drop size printing technology: the size of the jetted ink droplet can be freely controlled, thereby reducing the graininess of the picture, presenting better details, smooth color transition, and high saturation.



Technical Parameters

Media Type: Eco solvent:Vinyl,PP,PET film,flex,banner... Water Based:PP,PET Film

Ink: Eco Solvent / Water Based ink

Cleaning and Maintenance system: Auto Cleaning

Heating System : IR heater+heat circulator

RIP: UnitedFancy, FlexiPRINT, Maintop

Printer : AC220V 50HZ 1660W

Print Platform Vacuum Hold Down Area: AC220V 50HZ 1000W

FY-1804 : AC220V 50HZ 4060W

Application



High Resolution Printer

ECO SOL. PRINTER

FY-3200MS / i4

L4727mm×W862mm×H1427mm

3.2M print width
Minimalistic but not simple



Specifications

Model			FY-3200MS/i4
Printhead			EPSON I3200/E1
Number of Printhead			4pcs
Print width			3200mm
Print Speed *	4PASS		100m ² /h
	6PASS		85m ² /h
	8PASS		70m ² /h

1. The speed data are taken from the printer at high speed, a difference of 10% may occur when running with different computers.
2. Product specifications are subject to change without notice in advance. Color and shape in picture are for reference, computer and monitor not included. All rights reserved!

Features



High precision automatic elevated cleaning capping station for the perfect maintenance.



2 individually controlled powerful dryer system, to start and stop automatically when a job starts or stops.



Cellular platform with adjustable vacuum control, to move media with different GSM easily and accurately.



High sensitive crash sensor, to stop the carriage immediately if hitting on any unexpected stuff while moving, so as to offer a last protection to printhead.



IGUS caterpillar chain, durable to move back and forth silently with cables and tubes well protected inside.



Double-roller plus tension bar for banner feeding system and twin-roll vinyl feeding system, with high sensitive diffuse reflection sensor to feed media with or without blackback accurately.



Static-free pinch roller, to feed media accurately for best print quality.



Imported high quality guide, to move the carriage stably, smoothly and silently.



2.5L main tank plus sub tanks, for long time fluent and sufficient ink flow.

Technical Parameters

Media Type:	Banner, vinyl, mesh and other roll to roll outdoor printing material.
Ink:	Eco solvent ink
Media Type:	High precision automatic elevated cleaning capping station for the perfect maintenance
Heating System:	Front, middle and back heater, IR dryer, fan cooling system
RIP:	UnitedFancy, FlexiPRINT, Maintop
Printer :	AC220V 50HZ 1100W
Dryer :	AC220V 50HZ 7200W
Platform heating :	AC220V 50HZ 1800W

Application



Indoor outdoor advertising



Decorative painting



Interior Decor



Studio photo



Display Stand



Background

FY-3200AT Plus / AT Mini

3.2M print width, High Speed Solvent Printer
Spectacular Signage Solution

CHALLENGER[®]

Solvent Printer



With 4 pcs of Alpha printhead, the latest technology from SPT, particularly designed for signage printing, featuring high performance and low affordability, 30Khz fire frequency, 25pl droplet size, duo colors per head. A perfect combo of speed and resolution.

Technical Specifications

Model		FY-3200AT / H4	
Printhead		SPT Alpha 1024HG	
Number of Printhead		2	4
Print width		3200mm	
Print Speed *	2PASS	131m ² /h	260m ² /h
	3PASS	86m ² /h	172m ² /h
	4PASS	65m ² /h	131m ² /h

Ink: Solvent ink Eco solvent ink

Media: Banner, vinyl, mesh and other roll to roll outdoor printing material.

Ink supply system: Negative pressure ink supply

Print Interface: RJ45

Heating System: Front, middle and back heater, IR dryer, fan cooling system

RIP: United Fancy / Maintop

Cleaning and Maintenance System: Individual positive pressure cleaning, manual one-piece capping, LED lamp at home position

Printer: AC220V 50HZ 5A 1100W

Dryer: AC220V 50HZ 33A 7200W

Platform heating: AC220V 50HZ 8A 1800W

Printer Dimension: L4727mm x W862mm x H1427mm 810KG

Package Size: L4760mm x W1100mm x H1600mm 1000KG

1. The speed data are taken from the printer at high speed, a difference of 10% may occur when running with different computers.
2. Product specifications are subject to change without notice in advance. Color and shape in picture are for reference, computer and monitor not included. All rights reserved!

Options



Heating Take-up system



Double roll vinyl feeding system



Front single-row dryer

High Speed Solvent Printer

ECO SOL. PRINTER

FY-5300AT Plus

L7420mm×W1330mm×H1700mm



- Take-up System Not Included.

5.3M print width ,High Speed Solvent Printer New and Upgraded

Specifications

Model	FY-5300AT Plus					
Printhead	SPT Alpha 1024HG			SPT 508GS		
Number of Printhead	4pcs		6pcs		8pcs	
Print width	5300mm					
Print Speed *	2 PASS	288m ² /h	2 PASS	410m ² /h	3 PASS	180m ² /h
	3 PASS	192m ² /h	3 PASS	275m ² /h	4 PASS	140m ² /h
	4 PASS	144m ² /h	4 PASS	205m ² /h	6 PASS	90m ² /h

1. The speed data are taken from the printer at high speed,a difference of 10% may occur when running with different computers.
2. Product specifications are subject to change without notice in advance.Color and shape in picture are for reference.computer and monitor not included.All rights reserved!

Features

- Negative pressure ink supply and heatable sub tanks, to supply stable and steady ink flow under all conditions.
- High intensive cross-beam of 15cmx20cm steel,plus machine finished aluminium bar and double silent linear guide.
- Sturdy frame structure to assure mechanic precision and printing resolution after long life of use.
- Starry platform for perfectly balanced heating and vacuum media hold-down.
- Pneumatic electric press handle;pneumatic electric controlled press handle of pinch rollers and grid rollers ease of stable operation.



With 4 pcs of Alpha printhead, the latest technology from SPT, particularly designed for signage printing, featuring high performance and low affordability, 30Khz fire frequency, 25pl droplet size, duo colors per head. A perfect combo of speed and resolution.

Technical Parameters

Air Compressor Requirement:	Positive 0.6~0.8MPa
Media Type:	Banner,vinyl,mesh and other roll to roll outdoor printing material.
Ink:	Solvent Ink 4 color (CMYK)
Printhead Height:	Above Media Adjustable 2-8mm
Heating&Drying System:	Equipped(Infrared Ray+Fan Drying)
RIP:	UnitedFancy, FlexiPRINT, Maintop
Printer :	AC220V 50HZ 1500W
Dryer :	AC220V 50HZ 7200W
Platform heating :	AC220V 50HZ 2000W

Application





DYE SUBLIMATION

**DIRECT TEXTILE PRINTER
XKD1880/XKD3204**

I3200-A1



Mode	XKD1880-I3200A1	Direct Textile Printer
Printhead and Quantity	I3200-A1 4pcs	
Printing Speed/Mode	2PASS:130-150m ² /h	3PASS:100-120m ² /h 4PASS:80-90m ² /h

PRODUCT FEATURES

- New capping system, more reliable and durable.
- Constant tension feeding and take-up system to ensure accurate and smooth operation.
- Adopt mute guide rails, high precision and smooth operation to ensure the perfect quality output.
- All aluminum platform, high precision and durable.



SPECIFICATIONS

Print Width	1.63M/3.2M	Media Type	Flag cloth/Banner cloth/ Wrap knitted cloth/ Silver carving/ Satin drill
Heating System	Chromogenic machine	Dimensions(mm)	L3300*W1110*H1550mm L5000*W1100*H1600mm
Temperature/Humidity	Temperature: 20-30°C, Humidity: 50-65%	Packing Dimensions(mm)	L3395*W1320*H1610mm L5025*W1370*H1745mm
Power	AC220V;50HZ&60HZ;6KW/7KW	Net Weight(KG)	650kg/950kg
RIP Software	RIP / Maintop / Photoprint (Optional)	Gross Weight(KG)	750kg/1,100kg

DTF/NO CUT PRINTER

Keda

E-602

CHALLENGER®

FY-2560



White ink printer

Model	Q3-E602/FY2560	Q5-E604	Q5-E1204
Printhead and Quantity	I3200-A1 2PCS	I3200-A1 4PCS	I3200-A1 4PCS
Print Width	0.6M	0.6M	1.2M
Printing Quality	4Pass:12m ² /h 6Pass:10m ² /h	4Pass:22m ² /h 6Pass:15m ² /h	4Pass:30m ² /h 6Pass:20m ² /h
Ink	Water-based pigment ink		
Color	CMYK+W		
Media Type	PET film		
Interpace	RJ45		
RIP Software	Main Top,RIN,Photoprint(Optional)		
Power	350W		
Temperature/Humidity	Temperature:20-35°C, Humidity:35-65%		
Machine Dimension	L1660×W750×H1620mm	L1820×W820×H1620mm	L2390×W820×H1620mm
Package Dimension	L2025×W840×H740mm	L2025×W840×H740mm	L2630×W840×H750mm
Net Weight / Gross Weight	129KG / 180kg	152KG / 180kg	192KG / 250kg

Powder shaking machine

Model	D650	H650	H6501
Media Width	0-600mm		
Heat drying system	Efficient and powerful drying and curing		
Feedin system	Belt type		
Take up system	Automatic inductive		
Voltage	Voltage:220V, 20A, Power:3.22KW Energy consumption:1kw-2.5kw	Voltage:220V, 30A, Power:5.22KW Energy consumption:2kw-3.5kw	Voltage:220V,40A, Power:6.8KW Energy consumption:3kw-6.8kw
Machine Dimension	L2090×W1090×H1080mm	L1985×W1090×H1080mm	L2305×W1090×H1102mm
Package Dimension	L1930×W1120×H1136mm	L1900×W1140×H1134mm	L2100×W1140×H1164mm
Net Weight / Gross Weight	180KG / 260KG	180KG / 260KG	210KG / 300KG

DIGITAL INK PRINTING EQUIPMENTS & INSTRUMENTS TRADING CO. LLC

FLATBED PRINTER



Digital printer

OM-UV6090PRO

With 3-4pcs G5i/I3200-U1/I1600-U1 Print heads

Model No.	OM-UV6090PRO	Max Print Size	23.62"x 35.43" (60x90cm)
Max Print Height	130mm	Power Consumption	3 heads:1160W 4heads:1260W
Printer Head	3-4 pcs G5i/I3200-U1/I1600-U1 print heads		
Printing Board	Hoson		
Printing Speed	3 heads: 6pass+720°900+Bi Direction+Eclasion20%: 6'22" 6sqm/h 8pass+720°1200+Bi Direction+Eclasion20%: 7'44" 4.38sqm/h	I3200: 4pass:12sqm/h 6pass:10sqm/h 8pass:8sqm/h	I1600: 4pass:6sqm/h 6pass:5sqm/h 8pass:4sqm/h
	4 heads: 6pass+720°900+Bi Direction+Eclasion20%: 4'14" 9sqm/h 8pass+720°1200+Bi Direction+Eclasion20%: 5'09" 6.57sqm/h		
Ink Supply	500ml/Bottle with ink shortage automatic Alarm		
Ink Colors	CMYK+W ; CMYK+W+V ; CMYK+CMYK+W+V		
File Format	PDF,JPG,TIFF,EPS,AI,etc		
Software	Photoprint/RIPprint		
Working Environment	Temperature : 20-28 Humidity : 40-60%		
Machine Size&Net Weight	1820*1620*1400mm; 350kg		

1. AI Scanner Printing



2. Fluorescent Color Printing



MAXIMACH

LASER MARKER



- Long service life and high-precision marking
- Built-in mobile power supply, mobile marking
- Simple and convenient, suitable for marking on various materials



Area(mm)	100X100mm
Laser Power	Max 20w 30w 50w
Laser Re petition Rate	27.7-62.5 KHZ
Marking Line Speed	≤5000mm/s
Minimum Line	0.01mm
Minimum Character	0.15mm
Repeatability	±0.002mm
Total Power	400w
Electricity Demand	DC24V
Cooling Condition	Built-in air cooling
Control System	Integrated control system



UV Flatbed Printer

FY-1325 series

L4840mm×W2250mm×H1470mm



1.22M × 2.44M Print Size CCD Camera Registration Smart Positioning of Multiple Pictures

Minimalistic but not simple with speed, resolution, white ink and varnish available.

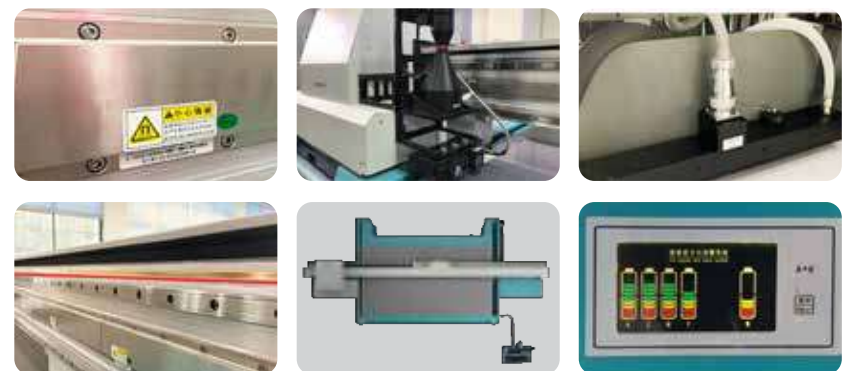
Specifications

Model		FY-1325G				FY-1325R							
Printhead		SPT 1024GS				Gen 5 / Gen 6							
Print Size		1220mm x 2440mm											
Printhead configuration		One-row 4heads @ 4 colors	two-row 8 heads @ 4 colors	3-row 12 heads @ 4 colors	4-row 16 heads @ 4 colors	One-row 2 heads @ 4 colors	two-row 4 heads @ 4 colors	3-row 6 heads @ 4 colors	4-row 8 heads @ 4 colors				
Print Speed *	4PASS	24m ² /h	45m ² /h	65m ² /h	84m ² /h	14m ² /h	21m ² /h	26m ² /h	46m ² /h	40m ² /h	64.8m ² /h	50m ² /h	83.3m ² /h
	6PASS	16.5m ² /h	31m ² /h	46m ² /h	60m ² /h	9m ² /h	15m ² /h	17m ² /h	26.8m ² /h	25m ² /h	43.1m ² /h	33m ² /h	51.8m ² /h
	8PASS	12.5m ² /h	22m ² /h	36m ² /h	48m ² /h	7m ² /h	11m ² /h	13m ² /h	23m ² /h	20m ² /h	32m ² /h	26m ² /h	43m ² /h

1. The speed data are taken from the printer at high speed, a difference of 10% may occur when running with different computers.
2. Product specifications are subject to change without notice in advance. Color and shape in picture are for reference, computer and monitor not included. All rights reserved!

Features

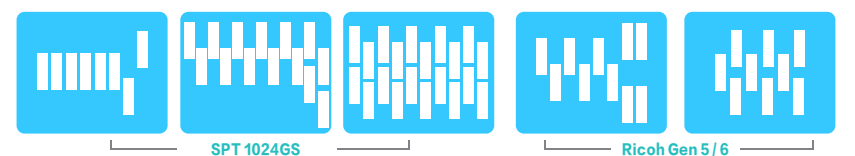
- Linear motor for more accurate and stable moving on X axis (Optional)
- Automatic visual positioning of objects by CCD camera (Optional)
- LED water-cooling curing system, which is more convenient in use and better in curing, with longer service life, less energy consumption and more environmentally friendly.
- Metallic Optical Encoder Scale, which is oil resistant, stable in moving with ease of maintenance and accuracy of reading.
- Double-tail flatbed structure for ease of media-loading.
- Ink level Display.



CCD Camera Registration (Optional)
Automatic visual positioning of objects by CCD camera

- Automatic test
- Free position of print objects
- Smart positioning of multiple pictures
- To save time, labor and running cost

Printhead & Layout Options



Technical Parameters

Media weight & thickness: 75KG/m², Max. 10CM
 Type: wood, density board, glass, metal, sheet, chevron board, PVC, Acrylic plate, ceramic tiles, Shaped crafts...
 Ink: UV Curable Ink
 Ink supply system: Negative pressure ink supply
 Curing method: Water-cooling LED Lamps
 RIP: UnitedFancy, FlexiPRINT, Maintop
 Printer: AC220V 50HZ 3800W
 Print Platform Vacuum Hold Down Area: AC220V 50HZ 2200W

Application



UV Flatbed Printer

FLATBED PRINTER

FY-1216 series

L3000mm×W2300mm×H1400mm



1.2M × 1.6M Print Size
CCD Camera Registration Smart Positioning of Multiple Pictures

Specifications

Model		FY-1216R		FY-1216F
Printhead		Gen 5	Gen 6	F printhead
Print Size		1200mm x 1600mm		
Print Speed*	4PASS	15.7m ² /h	21m ² /h	/
	6PASS	10.9m ² /h	16.5m ² /h	5.3m ² /h
	8PASS	8m ² /h	11m ² /h	3.8m ² /h

1、 The speed data are taken from the printer at high speed,a difference of 10% may occur when running with different computers.
 2、 Product specifications are subject to change without notice in advance.Color and shape in picture are for reference,computer and monitor not included.All rights reserved!

14

Features

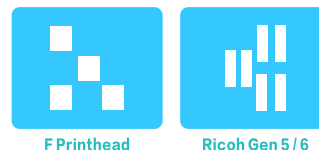
- Industrial printhead with long life span and high production.
- Alloy aluminium honeycomb flatbed, flatness tolerance within 250 micron 25kg per sqm.
- LED water-cooling curing system, which is more convenient in use and better in curing, with longer service life, less energy consumption and more environmentally friendly.
- Big size main tank, white ink circulation system, and ink level detector with LED display.
- New generation of Crash-Sensor System can effectively protect print head from physical damage during the printing.
- Silent dual rail structure, featuring speed and silence, more stable during the operation process of carriage moving to provide higher printing accuracy.



CCD Camera Registration(Optional)
 Automatic visual positioning of objects by CCD camera

- Automatic test
- Free position of print objects
- Smart positioning of multiple pictures
- To save time, labor and running cost

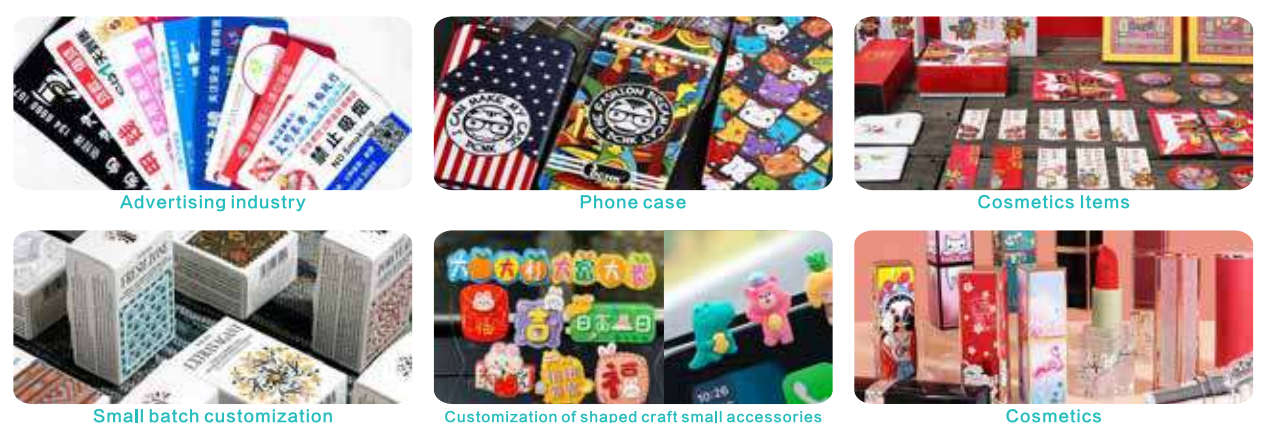
Printhead & Layout Options



Technical Parameters

Media weight & thickness: 80KG/m² & 10CM
 Type: wood, density board, glass, metal, sheet, chevron board, PVC, Acrylic plate, ceramic tiles, Shaped crafts...
 Ink: UV Curable Ink
 Ink supply system: Negative pressure ink supply
 Curing method: Water-cooling LED Lamps
 RIP: UnitedFancy, FlexiPRINT, Maintop
 Printer: AC220V 50HZ 500W
 Print Platform Vacuum Hold Down Area: AC220V 50HZ 1500W

Application



UV Roll to Roll

WitCOLOR
Digital

1.7meters
R2R UV

Printer Ultra i3200 1702UV-II



Technical Parameters

Model Name:	Printer Ultra i3200 1702UV-II		
Max. Printing Width:	1.70m		
Max. Fixable Roller Length:	1.60m		
Type:	UV ink, Outdoor & Indoor printer		
Print Head:	EPSON i3200-U1 × 2pcs		
Colors:	White+CMYK	CMYK+CMYK	
Printing Speed (sqm/hr)	Printing Mode	1H-W + 1H-CMYK	1H-CMYK + 1H-CMYK
	3PASS	-	-
	4PASS	-	-
	6PASS	12	24
	8PASS	8	16
Media Type:	Roll media (PET Film, Flex, Vinyl,Backlit ,Baner,PP, etc)		
● Standard configuration ○ Optional configuration payable			
Media Processing:	● Roll to Roll: Auto Feeding + Auto Roll Up ○ Roll to Roll: Auto Feeding		
Printing Table:	● Vacuum		

RIP Software:	● Photoprint ○ PrintFactory / Maintop
Image Format:	TIFF, JPG, EPS, PDF, PNG, etc.
Interface:	LAN / Ethernet Interface
OperatingSystem:	Win 10 / Win 7
PC Configuration:	○ PC System: ○ Win10 / Win 7-64 Bit (Professional or Ultimate Version) ○ CPU: Intel i5 or i7 ○ RAM: KST 16GB ○ Hard Disk: WD 1T ○ Hard Disk Format: NTFS ○ Disk C: 100G at least ○ [SolidDisk: 256G or more for Computer system only - Recommended]
Power Supply:	AC220V, 50HZ±10%, UPS required
Power:	2000W
Temperature & Humidity:	Temperature 20-30 ,Humidity 60-70%
Packing Size:	2.90×0.70×1.10m
G.W. & N.W.:	340KG / 270KG
Remark:The date is subject to change without prior .The speed will be varied due to different PC settings.	

UV Roll to Roll

FY-UV1800W

L3180mm×W1280mm×H1850 mm

1.8M print width ,Various printing options of image,white and varnish

CHALLENGER



Specifications

Printhead & Layout Options



Model	FY-UV1800W				
Printhead	EPSON I 3200				
Print width	1-4pcs				
Number of Printhead	1800mm				
Print Speed *		Staggered colors (4pcs)	Staggered colors (3pcs)	Staggered colors (2pcs)	Sandwich white (3pcs)
	4PASS	52m ² /h	36m ² /h	24m ² /h	12m ² /h
	6PASS	38m ² /h	24m ² /h	16m ² /h	8m ² /h

Printer : AC220V 5 0HZ 1 500W Print Platform Vacuum Hold Down Area : AC220V 5 0HZ 2 200W



UV Roll to Roll

X1-X1600UV/X3-X1800UV

I3200-U1



Mode	X1-X1600UV/1800UV-I3200U1
Printhead and Quantity	I3200-U1 1pc
Printing Speed/Mode	6PASS:12m ² /h 8PASS:9m ² /h

SPECIFICATIONS

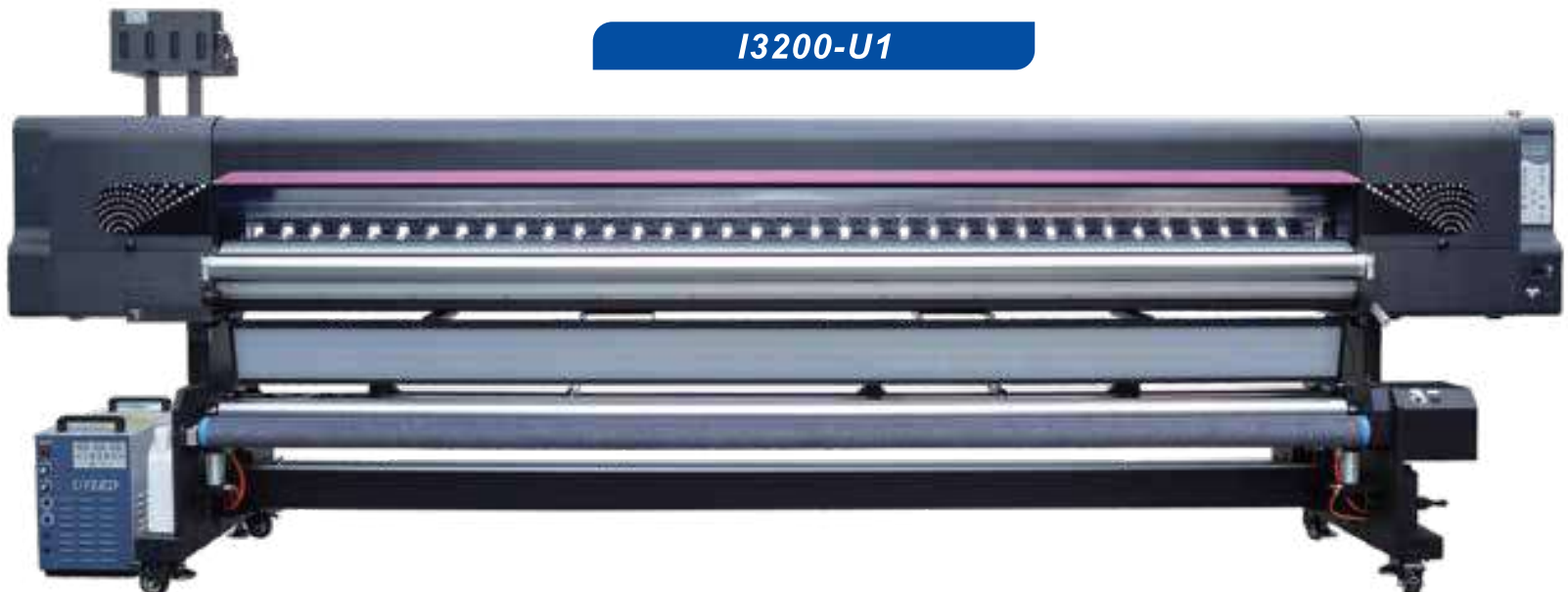
Print Width	X1-X1600 : 1.52M X1-X1800 : 1.8M	Media Type	All kinds of indoor and outdoor advertising materials and decoration materials
Heating System	Circulating water cooling System	Dimensions(mm)	X1-K1600: L2362*W900*H1500mm X3-K1800: L2621*W900*H1500mm
Temperature/Humidity	Temperature: 20-30°C , Humidity: 45-65%	Packing Dimensions(mm)	X1-K1600: L2440*W710*H660mm X3-K1800: L2730*W710*H710mm
Power	Machine Power: 500W	Net Weight(KG)	X1-K1600: 152KG X3-K1800: 160KG
RIP Software	Maintop / Photoprint (Optional)	Gross Weight(KG)	X1-K1600: 220KG X3-K1800: 240KG



UV Roll to Roll

T3200UV

I3200-U1



Mode	T3202UV-I3200U1	T3203UV-I3200U1	T3204UV-I3200U1
Printhead and Quantity	I3200-U1 2pcs	I3200-U1 3pcs	I3200-U1 4pcs
Printing Speed/Mode	8PASS:16m ² /h	8PASS:24m ² /h	8PASS:32m ² /h

SPECIFICATIONS

Print Width	3.2M	Media Type	All kinds of indoor and outdoor advertising materials and decoration materials
Heating System	Circulating water cooling System	Dimensions(mm)	L4520*W985*H1728mm
Temperature/Humidity	Temperature: 20-28°C , Humidity: 40-80%	Packing Dimensions(mm)	L4620*W1085*H1330mm
Power	Machine Power: 500W	Net Weight(KG)	540KG
RIP Software	RIIN / Maintop / Photoprint (Optional)	Gross Weight(KG)	760KG

UV Roll to Roll

RICOH LED UV Roll to Roll printer

Adopted RICOH GEN6 Full Steel Industrial Print Head, Ink Drop Volume 3-5PL



Technical Specification		3.2m Led Uv Roll To Roll Printer	
Printer Model :	UVIP 5R7303/7304/7306/7308		
Print Head Quantity ;	RICOH GEN6 4/6/8 Pcs		
Printing Width :	3.2 M		
Printing Speed			
Printing Mode	Double-Rowed	Tripple-Rowed	
FILM Frontlite	50 M ² /H	75 M ² /H	
Regular Backlite	40 M ² /H	60 M ² /H	
Film Backlite	30 M ² /H	45 M ² /H	
Uv: Led UV			
Color Mode :	CMYK +LC+LM +W +VARNISH (Customized Combination Available, white Varnish Optional)		
Media Processing :	Roll To Roll+auto Feeding + Auto Take Up,media Pre Heating		
Image Format :	Tiff ,Jpg,Eps ,Pdf		
Rip Software :	United Fancy /Photoprint /Onyx		
Interface:	RJ45		
Operating Sysytem :	Windows 7 /windows 10		
Power Supply:	AC220v 50 Hz		
Power :	3000w		
Temperature :	20 – 30 °C		
Humidity ;	60 -70 %		
Packing Size:	5.55 X1.23 X 1.76 M		
GW /NW :	1166kg/966kg		

UV HYBRID

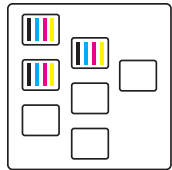
FY-1800H

CHALLENGER

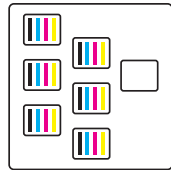
1.8M print width, hybrid for roll to roll and sheet material



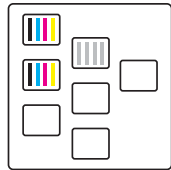
Printhead Options :



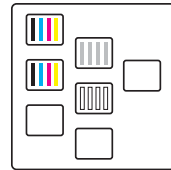
4Cx1-6



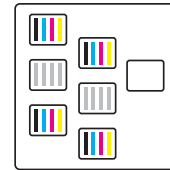
4C+W+4C



4C+W+4C+V



4Cx2+2W+4Cx2



4C+W+4C+W+4C+V Matt+V Gloss

Technical Specifications

Model	FY-1800H				
Printhead	EPSON I3200				
Print width	1-7 pcs				
Printhead Layout Options	1800mm				
* Print Speed		Staggered colors (6pcs)	Staggered colors (3pcs)	Sandwich white (6pcs)	Sandwich white+Varnish (7pcs)
	4PASS	76.2m ² /h	38.1m ² /h	25.4m ² /h	12.7m ² /h
	6PASS	51m ² /h	25.5m ² /h	17m ² /h	8.5m ² /h

Media width : 1800mm

Type : Soft material like SAV, PET Film, canvas, leather, as well as rigid material like KT board, PS board, PPhollow...

Ink : UV Curable Ink

Ink supply system : Negative pressure ink supply

Curing method : LED UV Lamp

RIP : UnitedFancy, FlexiPRINT, Maintop

Air Compressor Requirement : Positive 0.6~0.8MPa

Print Interface : USB 3.0

Printer : AC220V 50HZ 3800W

Print Platform Vacuum Hold Down Area : AC220V 50HZ 2200W

Operation Environment : Temperature 20 -28 Humidity 40%-60%

Printer Dimensions : L3190mm x W1475mm x H1460mm

UV HYBRID

FY-UV5300W

CHALLENGER[®]



NEW

Recommendations

FY-UV5300W

5.2M print width with belt
stable, balance feeding without wrinkles



Green



High-quality



Stable



Add: No.1 Lane 19 Ganghe Rd.Xidu,Fengxian
Dist Shanghai 201401,P.R.China
Tel:+86-(0)21-67158919/20/21
Website:www.fyunion.com





Reinforced carriage plate for multiple combinations of different color matches.



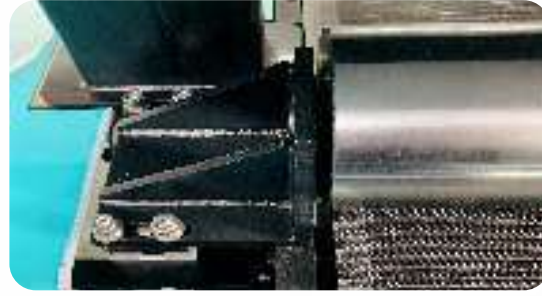
Powerful vacuum blower to attach media onto the belt tight and flat, featuring compact size, light weight, silent and long continuous working hours.



Strengthful chrome plated shaft, to secure the feeding of media straight and flat, for better print output.



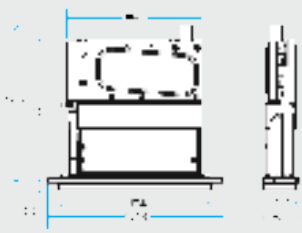
Power linear motor.



One-press pneumatic shaft controller, for straight and flat media feeding, with ease of use and maintenance.



Strengthful chrome plated shaft, to secure the feeding of media straight and flat, for better print output.



SPT1024GS industrial printhead, with features of 72mm print width and variable droplets from 7 to 42pl, to deliver high production speed and smoothy gradient for sharp and fine printing.

Model		FY-UV5300W			
Printhead		SPT1024GS			
Number of Printhead		4	8	12	16
Print width		5200mm			
Print Speed *	4PASS	29m ² /h	50m ² /h	81m ² /h	103m ² /h
	6PASS	19m ² /h	35m ² /h	55m ² /h	70m ² /h
	8PASS	13m ² /h	26m ² /h	39m ² /h	50m ² /h
Media	Width	5200mm			
	Type	Vinyl, Spread flex, PVC soft film, PET film, clear film in roll			
Ink		UV Curable Ink			
Ink supply system		Negative pressure ink supply			
Curing method		UV LED Lamp			
RIP Software		United Fancy			
Vacuum blower capacity		Positive 6KG			
Print Interface		USB 3.0			
Power Specification	Printer	AC220V	50HZ	16.7A	3670W
	Print Platform Vacuum Hold Down Area	AC220V	50HZ	20A	4400W
Operation Environment		Temperature : 20°C-28°C Humidity : 40%-60%			
Printer Dimensions		L7944mm×W1940mm×H1700mm 5500kg			
Package Size		/			

1、 The speed listed above is test speed on the printer,a difference of 10% may occur when running with different computers.
 2、 Product specifications are subject to change without notice in advance.Color and shape in picture are for reference,computer and monitor not included.All rights reserved!

UV HYBRID PRINTERS

FY-UV3500W

L6100mm×W1584mm×H1670mm



3.4M print width ,hybrid for roll to roll and sheet material

Specifications

Model		FY-UV3500W		
Printhead		SPT1024GS	Gen 5	Gen 6
Number of Printhead		16	8	
Print width		3400mm		
Print Speed *	4PASS	104m ² /h	76m ² /h	82m ² /h
	6PASS	74m ² /h	55m ² /h	61m ² /h
	8PASS	53m ² /h	33m ² /h	40m ² /h

1. The speed data are taken from the printer at high speed,a difference of 10% may occur when running with different computers.
2. Product specifications are subject to change without notice in advance.Color and shape in picture are for reference,computer and monitor not included.All rights reserved!

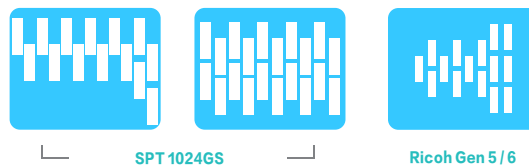


Features

- Pneumatic fixing rod for rigid material, to print both rigid and flexible material on one printer.
- Powerful vacuum blower to attach media onto the belt tight and flat, featuring compact size, light weight, silent and long continuous working hours.
- With double rollers for both feeding and take-up, media with different thicknesses and stretchabilities are well catered and conveniently loaded.
- Power linear motor.
- One-press pneumatic shaft controller, for straight and flat media feeding, with ease of use and maintenance.
- Upgraded media feeding system for stable, straight and well balanced media moving



Printhead & Layout Options



Technical Parameters

Air Compressor Requirement : Positive 0.6~0.8MPa
Media Type : Vinyl, Spread flex, PVC soft film, PET film, clear film in roll and KT board, PS board, PP hollow...
Ink: UV Curable Ink
Ink supply system: Negative pressure ink supply
Curing method: LED UV Lamp
RIP: UnitedFancy, FlexiPRINT, Maintop
Printer: AC220V 50HZ 7030W
Print Platform Vacuum Hold Down Area: AC220V 50HZ 4400W

Application



UV HYBRID

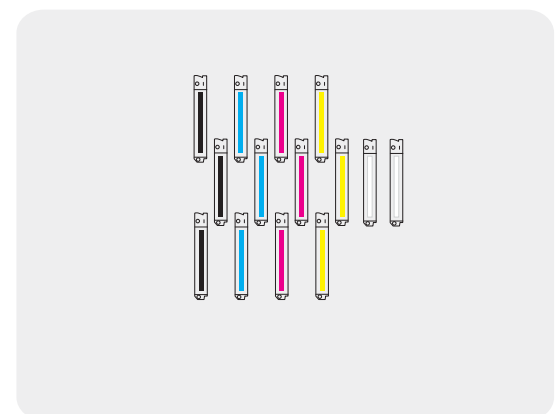
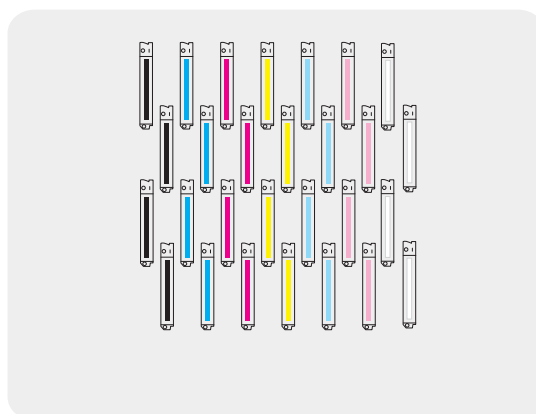
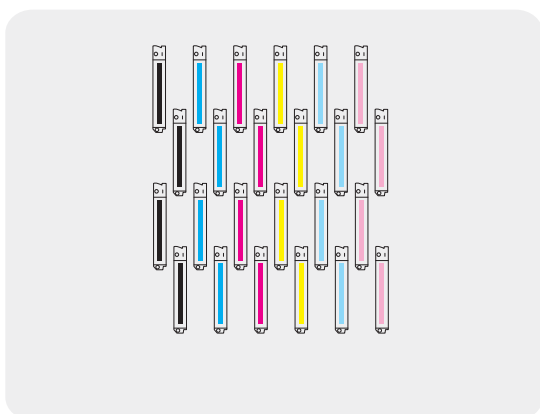


RM 3300PRO

MAXIMACH



Technical Parameters			
Machine Brand	LANQI	Printing Resolution	Up to 720* 2880 dpi
Machine Model	RM3300PRO	Printing Color	C、M、Y、K、Lc、Lm、W、Lk
Printing Width	3200mm	Printing Ink	Environmental friendly UV curable ink(excluding VOC)
Printing Media	Any soft materials such as soft film,backlit film,car sticker,3P cloth,coated banner,canvas,light box cloth,one way vision sticker		
Printing interface	High speed USB transmission interface		
Printing thickness	Maximum printing 10 mm thickness		
Media storage and retrieval	Roll to roll, automatic receiving and feeding system		
Purge System	Single color positive pressure purging,anti-clogging and flash spray		
Curing System	Imported LED-UV lamp curing system		
File Format	BMP、TIF、JPG、PDF、EPS		
Rip Software	Print Factory color management software imported from Holland		
Control System	Beijing BYHX control board (Can provide 16 printhead driver card interfaces, capable of supporting up to 32 printheads)		
Color Control	International standard ICC color control, curve and density adjustable function		
Power Supply	AC220V(±10%) / 50-60HZ / 6000W		
Working Environment	Temperature 20 -30 /Humidity 30%-65%		
Machine Weight	N.W 2930 kg/G.W 3230kg		
Machine Size	Actual size : L5550*W1600*H1750mm/Packings size : L6000*W1850*H2000mm		



Printing Speed	Konica 1024i 6PL(4 rows)	Konica 1024i 13PL(4 rows)	Konica 1024A 6PL(4 rows)
Exterior light mode	120 m ² /h	140 m ² /h	120 m ² /h
Inerior light modet	80 m ² /h	100 m ² /h	80 m ² /h
Color whit e color mode	40 m ² /h	50 m ² /h	40 m ² /h

CNC ROUTER

Ruijie

RJ1325C



Technical Parameters

Model	RJ6090C	RJ1212C	RJ1218C	RJ1224C	RJ1325C
Working Area	600mmx900mm	1200mmx1200mm	1200mmx1800mm	1200mx2400mm	1300mm x 2500mm
Resolution	±0.08mm	±0.08mm	±0.08mm	±0.08mm	±0.08mm
Spindle Power	1.5-2.2kw	1.5-2.2kw	1.5-2.2kw	1.5-2.2kw	3.0kw
Spindle Speed	6000-24000rpm	6000-24000rpm	6000-24000rpm	6000-24000rpm	6000-24000rpm
Working Voltage	AC220V/ 50Hz	AC220V/ 50Hz	AC220V/ 50Hz	AC220V/ 50Hz	AC220V/ 50Hz
Engraving Speed	12000mm/min	12000mm/min	12000mm/min	12000mm/min	12000mm/min
Feeding Height	80mm	80mm	80mm	80mm	150mm
Tool Diameter	Φ3.175mm , Φ6.0mm, Φ12.7mm	Φ3.175mm , Φ6.0mm,Φ12.7mm	Φ3.175mm , Φ6.0mm,Φ12.7mm	Φ3.175 mm, Φ6.0mm,Φ12.7mm	Φ3.175 mm, Φ6.0mm,Φ12.7mm
Working Dictate	HPGL, G Code	HPGL, G Code	HPGL, G Code	HPGL, G Code	HPGL, G Code

LASER ENGRAVER

Ruijie

RJ6040/1060/1280/1390/1510/1325

Technical Parameters

Model	P Series
Working Size	600x400mm, 1000x600mm, 1200x800mm, 1200x900mm, 1500x1000mm, 1300x2500mm
Laser Type	DC glass laser tube(CO2)
Wavelength	10.6um
Laser Power	40W, 60W, 80W, 100W, 130W,150W
Engraving Speed	0-1200mm/s
Cutting Speed	0-600mm/s
Reposition Accuracy	≤±0.01mm
Cooling System	Water cooling system
Control System	Digital Offline control system
	Stepper motor
Supported Format and Software	PLT,DST,DXF,DWG,AI,LAS Support AutoCAD, Corel Draw output directly
Minimum Letter Size	Chinese:1.5mm English:1mm
Working Voltage	AC200V/110V ±10% 50HZ/60HZ
Machine Power	≤1500W
Working	Temperature:0-45°C



CUTTING PLOTTER

YITU VA24\VA48\VA60



MAXIMACH



Model	VA24	VA48	VA60
Product color	Red, white		
Fixed mode	Floor stand(Optional)	Floor stand	Floor stand
Max media width	720MM	1350MM	1650MM
Max cutting width	610MM	1240MM	1540MM
MaxPatrol Cutting Width	570MM	1200MM	1500MM
Packing dimensions	1000*360*380MM	1620*360*390MM	1920*360*390MM
Weight	18KG	39KG	43KG
Cutting precision	0.01MM		
Repeat precision	0.082MM		
Max moving speed	960MM/S		
Max cutting speed	750MM/S		
Max force	2000G		
Working environment	+5°C- +35°C		
Power	<1 00W		
Connector interface	U/WIFI/ USB disk, USB cable, WiFi (optional)		

Available Inks & Spare Parts for Solvent, Eco solvent, UV & Dyesub Machines:

WitCOLOR
Digital

CHALLENGER

